



2025

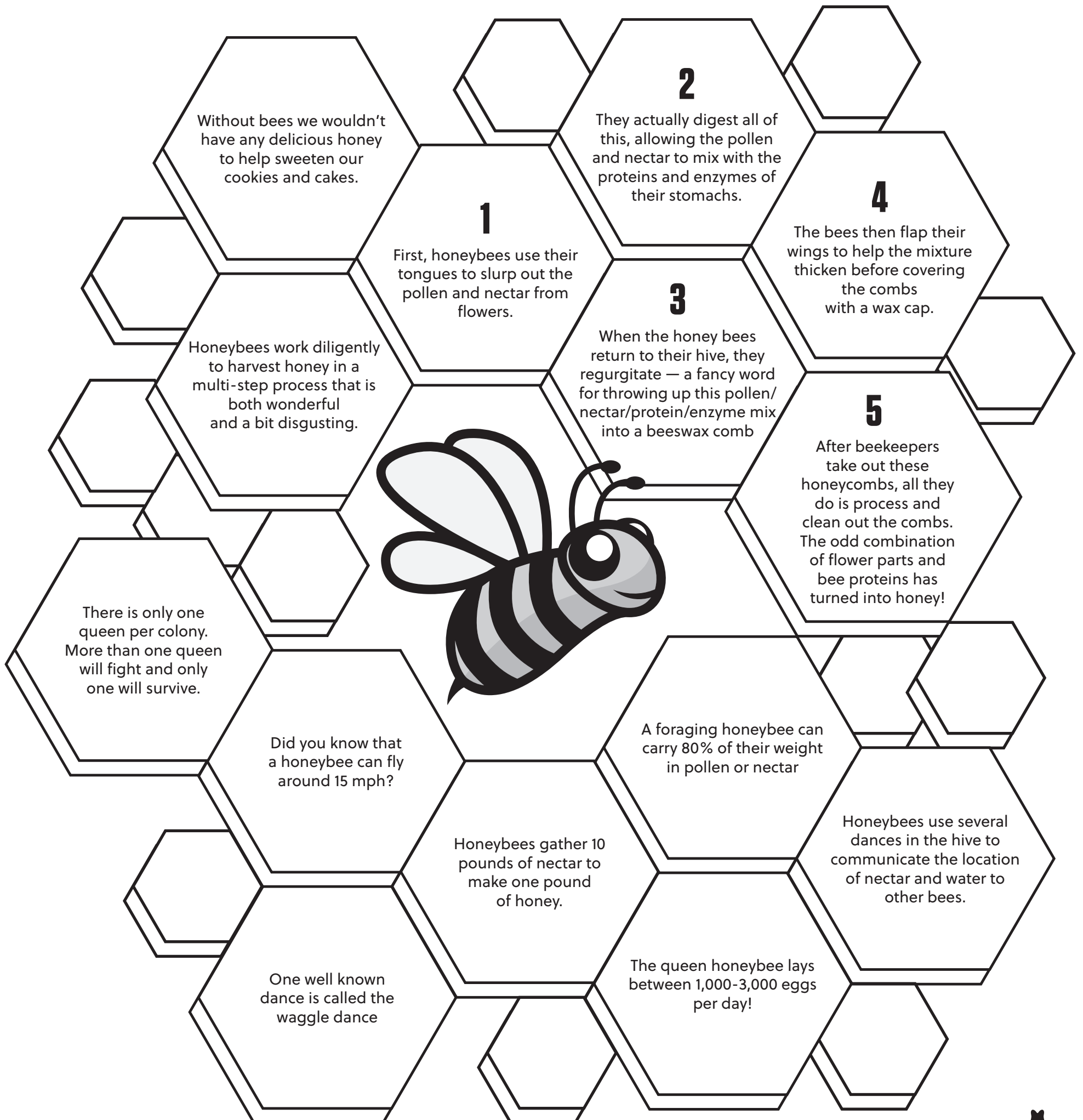
RODEO ROUNDUP

ACTIVITY BOOKLET

CREATIVITY CONTEST ON THE BACK PAGE!

BEE FACTS

(Reading: 110.14-2 a,b,c, 3, 4a, 11, 13c)



Match the fraction within the hive with its equivalent. Each answer is used only one time.

2/3
1
1/2
3/6
1/4
3/4
8/8

O) 2/4

P) 4/6

Q) 2/8

R) 3/3

S) 1/2

T) 1

U) 6/8

J) $257 + 235 =$

A) $926 - 336 =$

B) $926 - 336 =$

C) $926 - 336 =$

D) $5 \times 7 =$

E) $8 \times 2 =$

F) $507 - 194 =$

G) $600 - 438 =$

H) $6 \times 4 =$

I) $745 - 196 =$

M) $577 + 128 =$

N) $10 \times 3 =$

K) $584 - 254 =$

L) $4 \times 4 =$

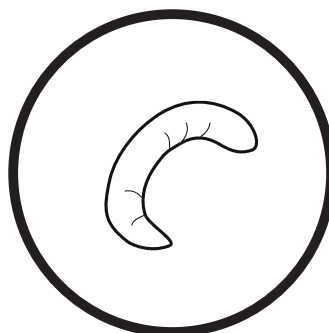
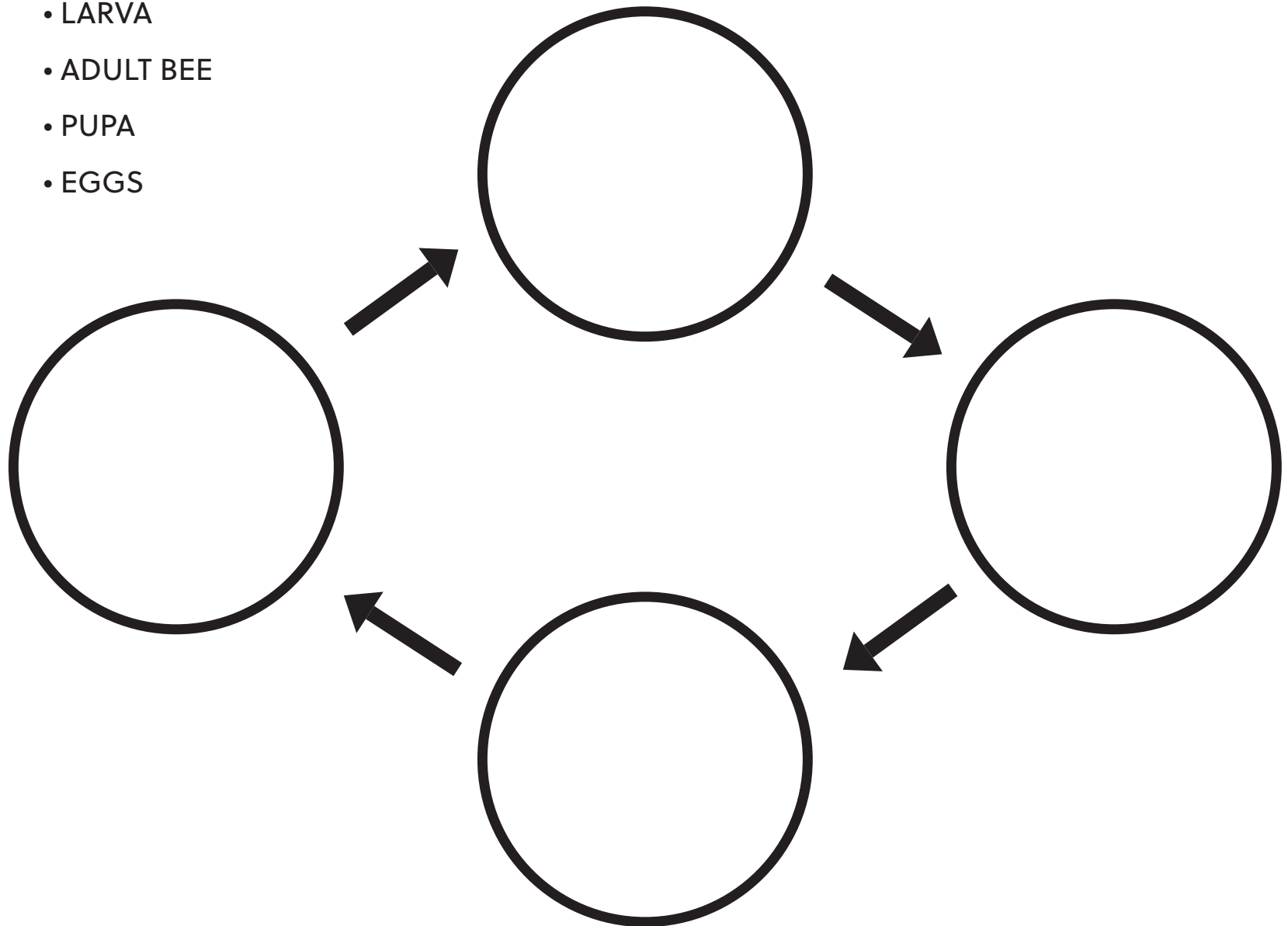


LIFE CYCLE OF A BEE

(Science: 112.14-3.2a, 3.2d, 3.10a, 3.10b)

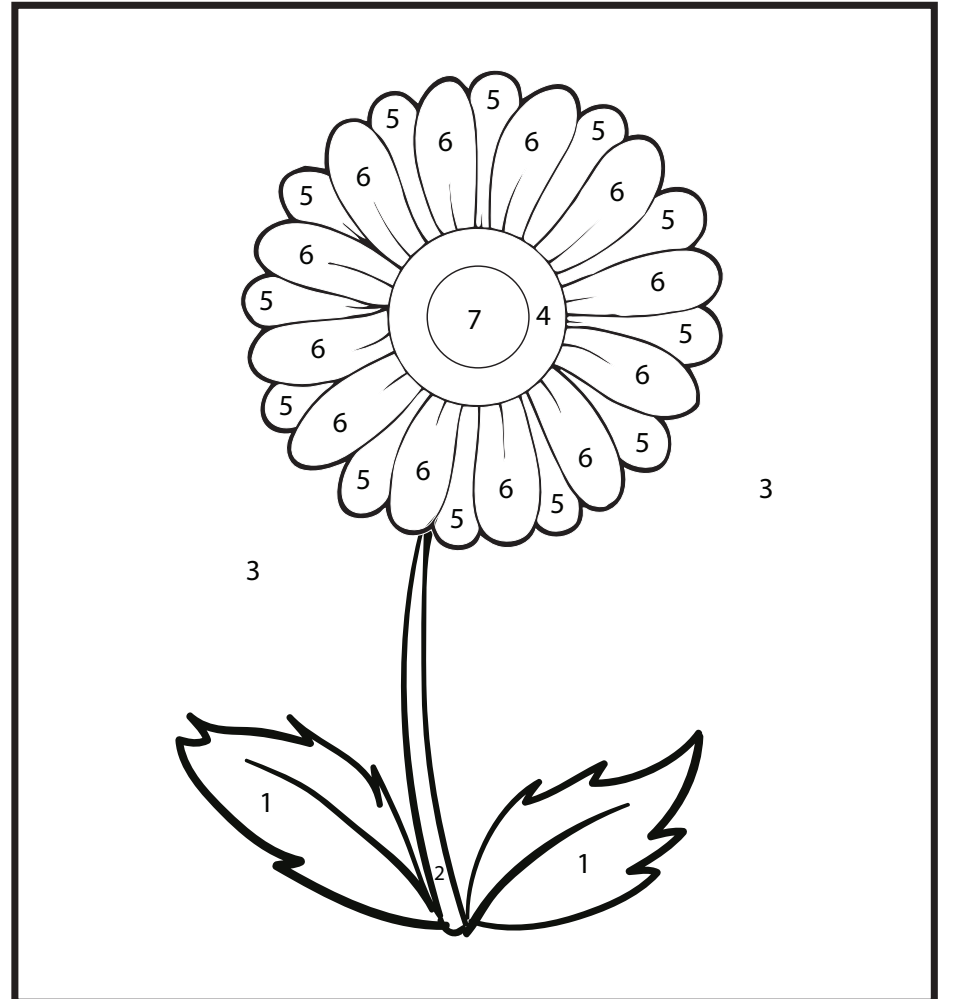
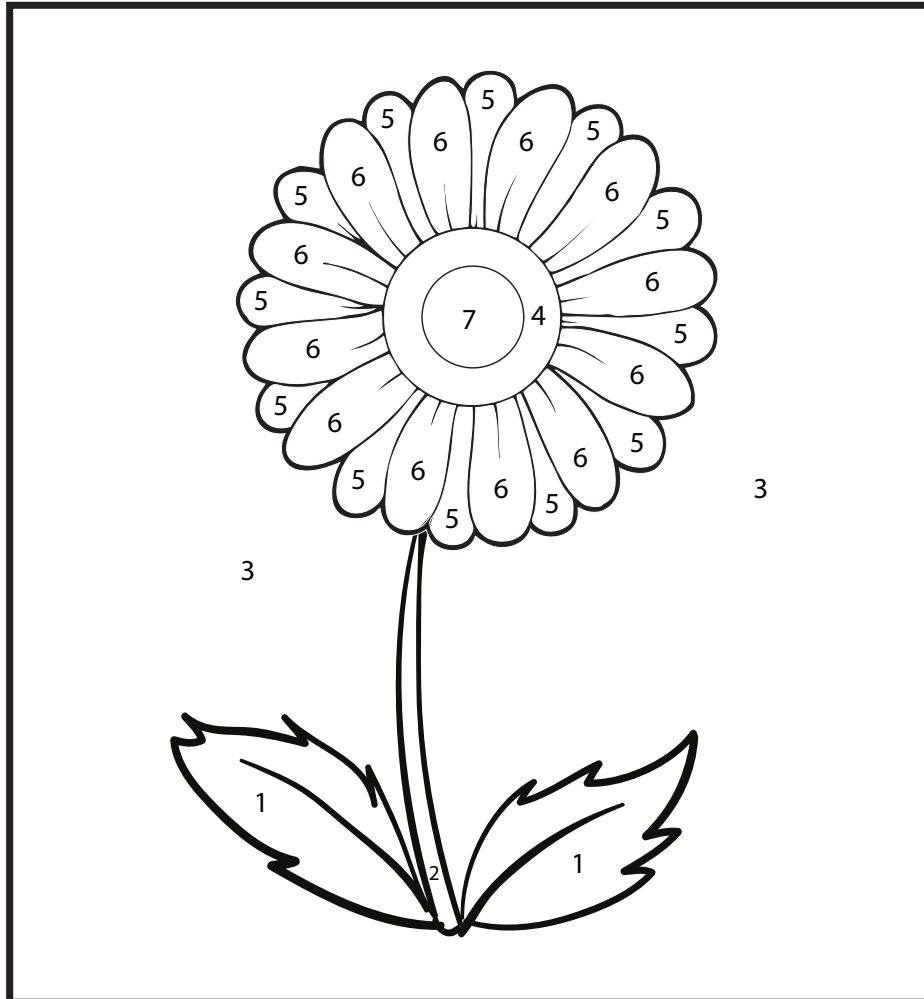
Complete the chart below filling in the correct stages of the life cycle of a bee.
You can write the stages, then cut out pictures and glue them in the correct circle.

- LARVA
- ADULT BEE
- PUPA
- EGGS



COLOR BY NUMBER

Color each flower by number to see the difference between how we see flowers and how bees see the same flowers.



HOW HUMANS SEE IT

1. Green
2. Dark green
3. Blue
4. Brown
5. Red
6. Yellow
7. White

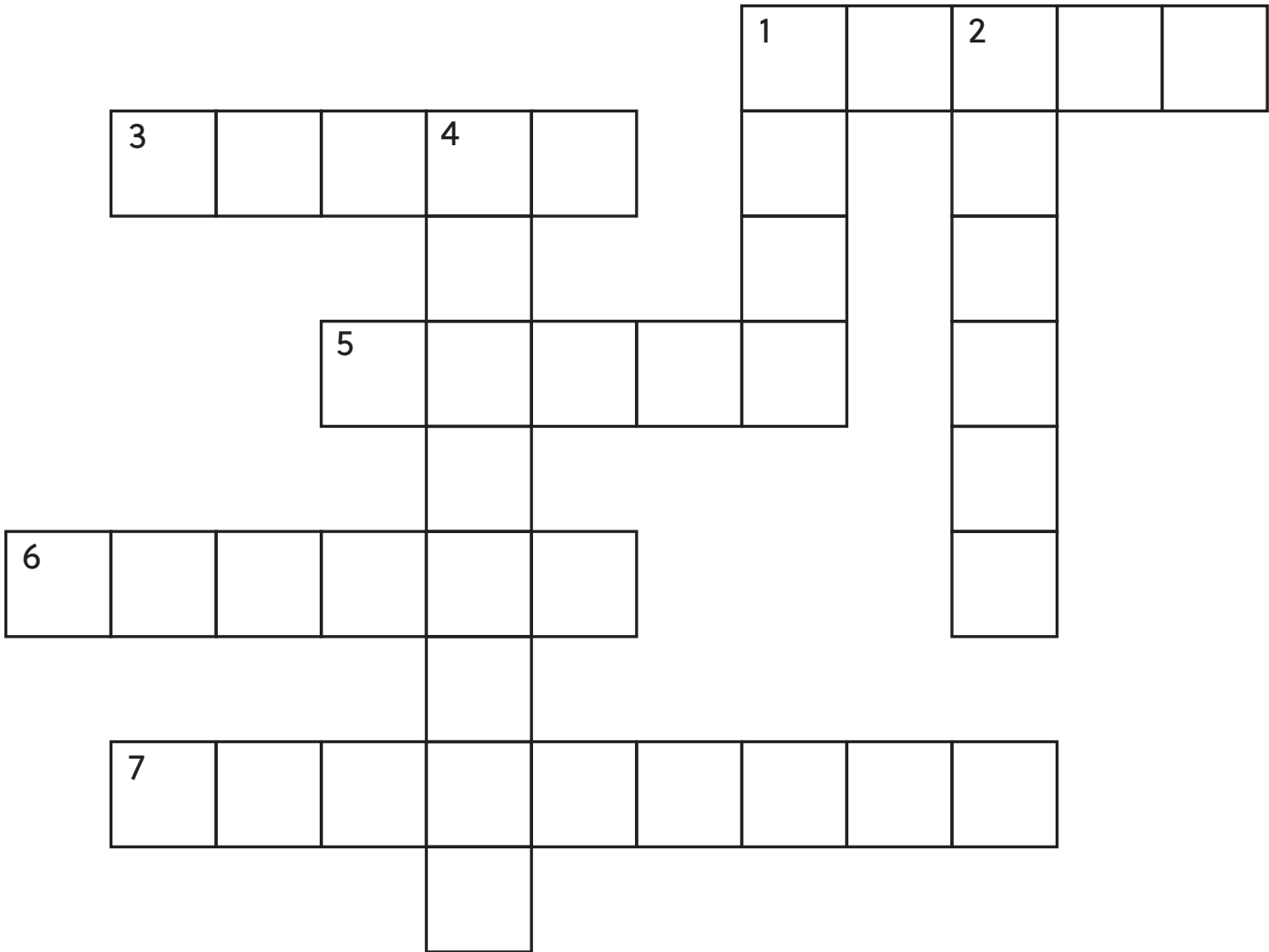
HOW BEES SEE IT

1. Light orange
2. Dark orange
3. White
4. White
5. Gray
6. White
7. Red



BEE CROSSWORD PUZZLE

Complete the activity.



ACROSS

- 1. A sweet fluid produced by bees from nectar
- 3. Dance bee will do as they get close to food
- 5. Male bee whose only function is to mate with the queen
- 6. Dust like cells of the anthers of flowers
- 7. Cells where honey is stored

DOWN

- 1. A structure for housing bees
- 2. Sweet liquid of flowers gathered by bees for making honey
- 4. Bee that attends to the queen, the babies, or larvae of the hive

WORD BANK:

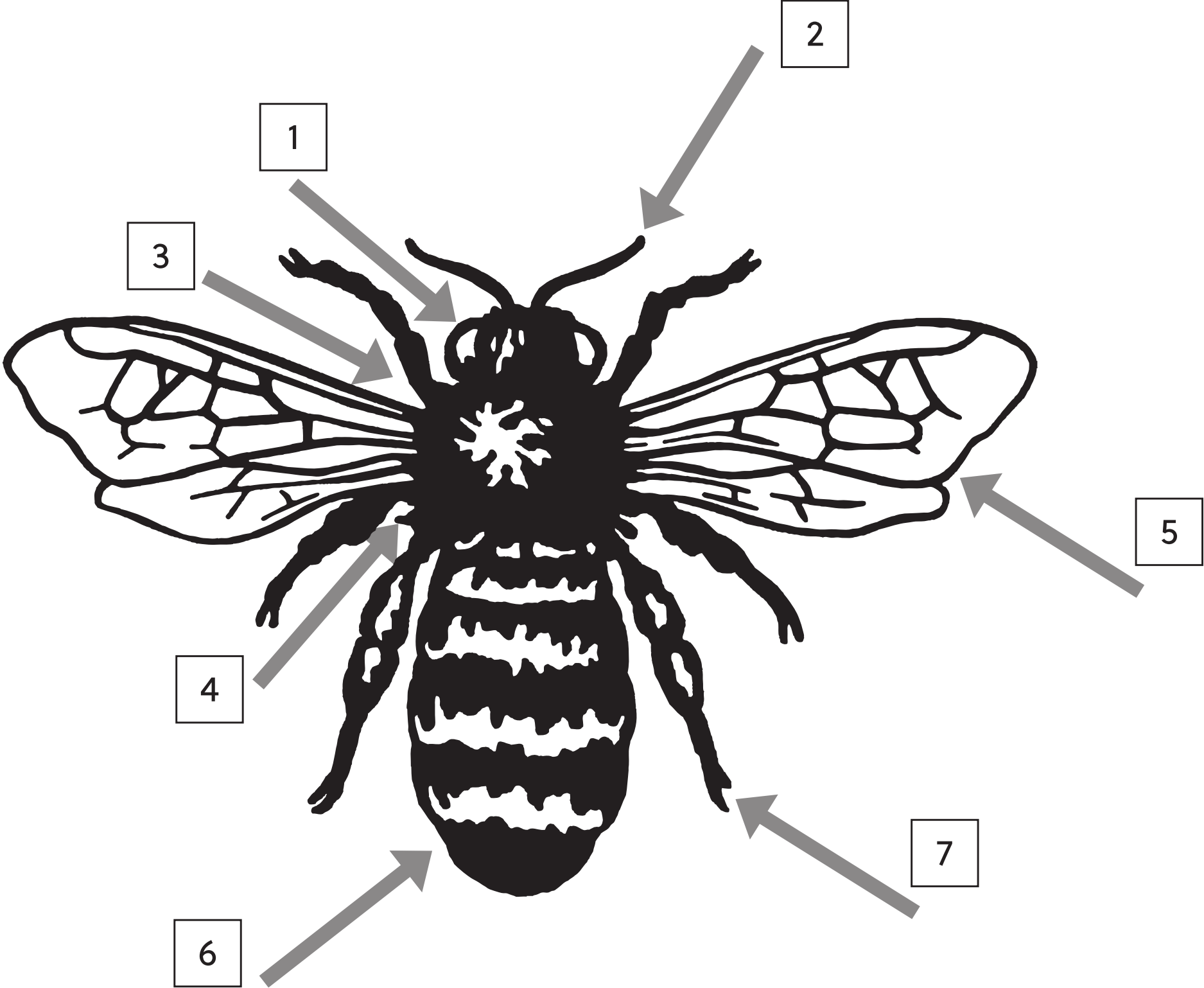
- Honey
 - Honeycomb
 - Pollen
- Drone
 - Round
 - Hive
- Nectar
 - Nurse Bee



NAME THE PARTS OF A BEE

(Science: 112.14- 3.2a, 3.2d, 3.10a, 3.10b)

Write the correct body part next to the number and arrow pointing to the bee.



ANTENNA

LEG

HEAD

WINGS

THORAX

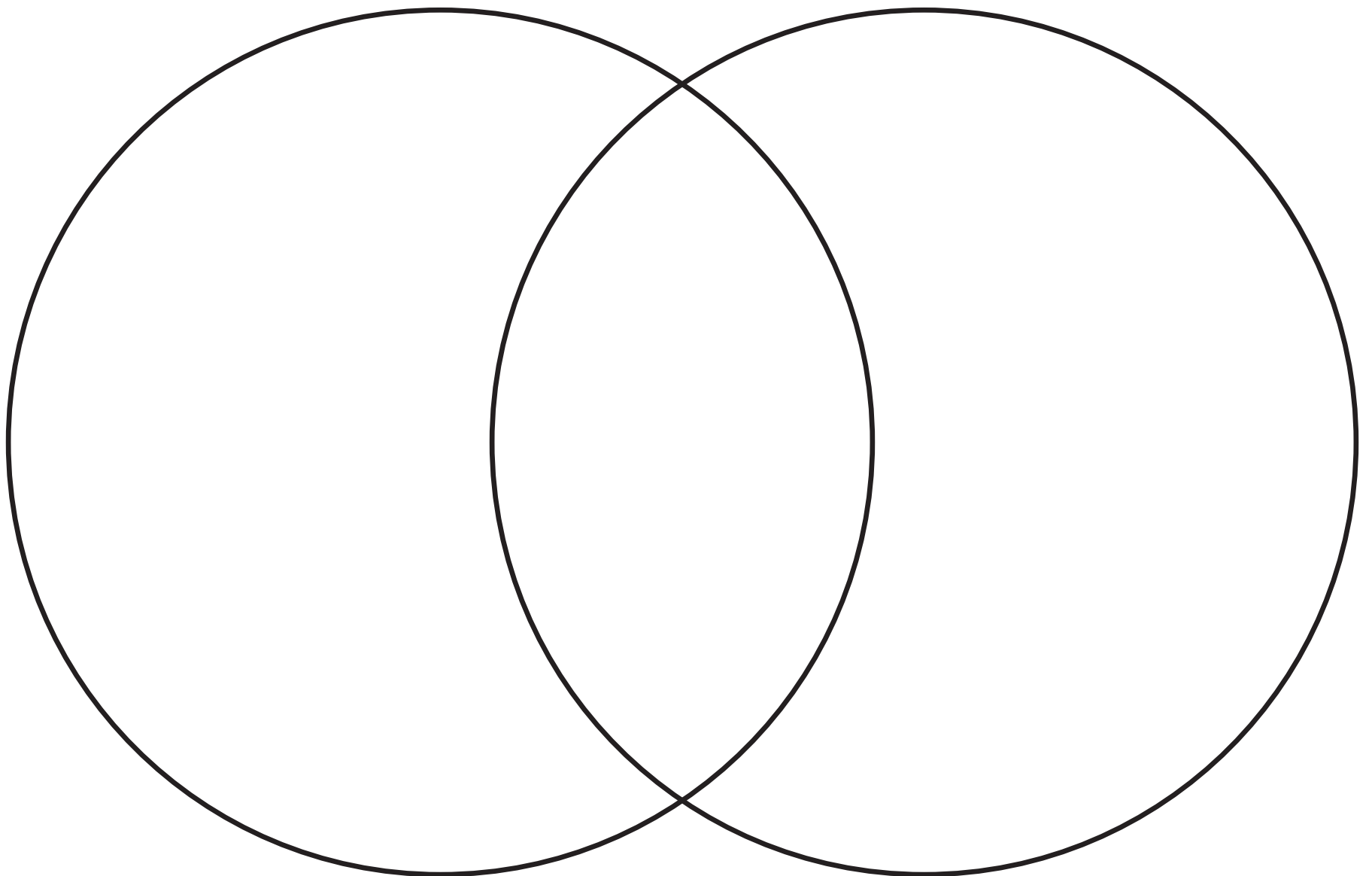
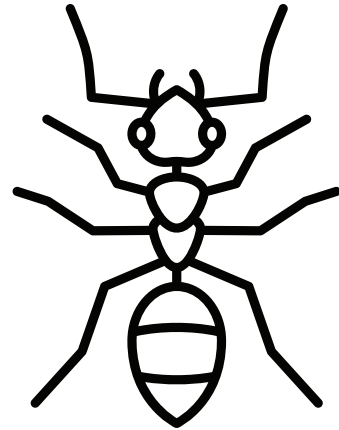
ABDOMEN

COMPOUND EYE



ARE BEES INSECTS?

Ants are insects. Are bees? In the outside of each circle, write down how they are different.
Where the circles intersect, write down how they are the same.



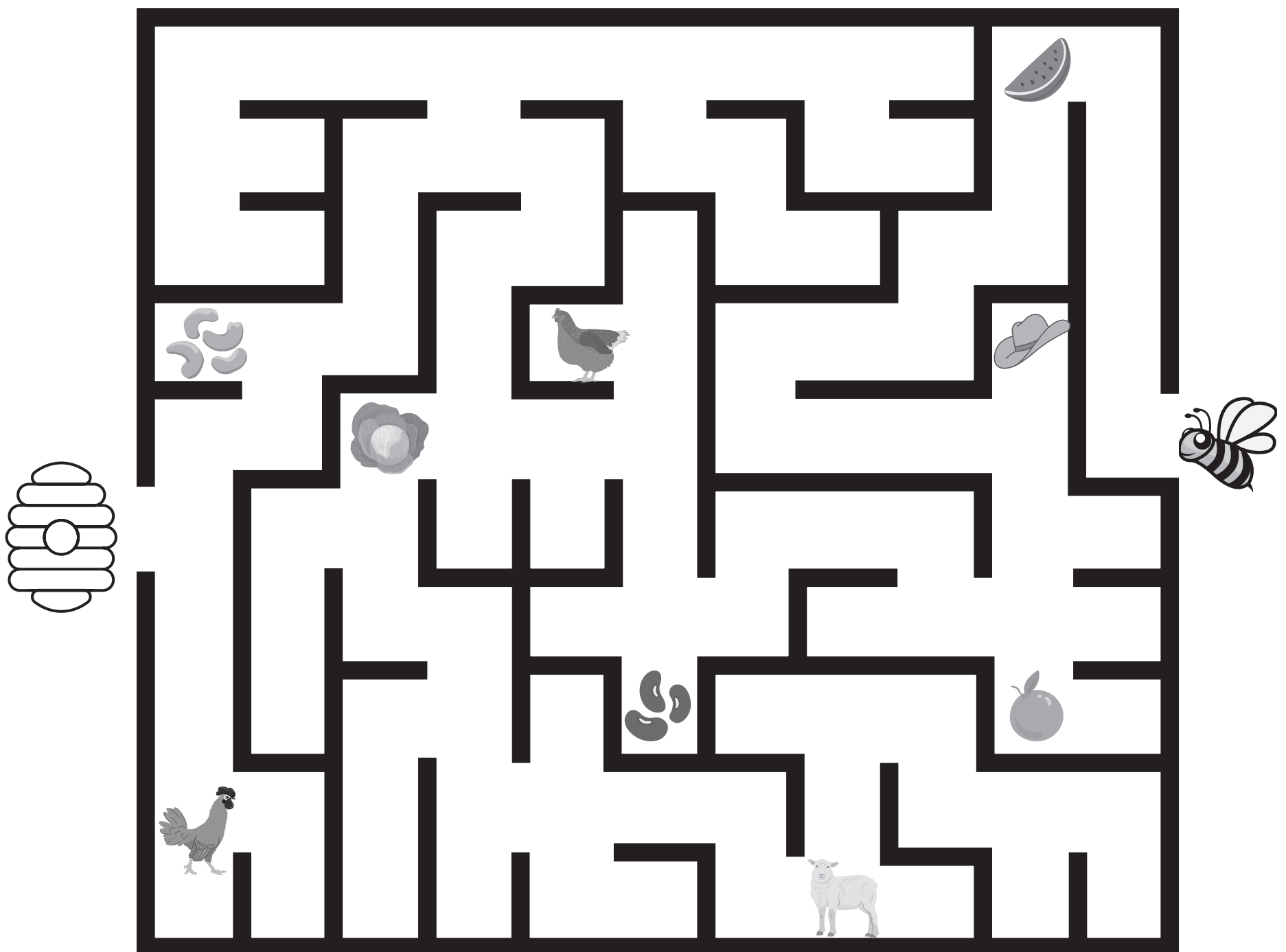
WHAT DO BEES POLLINATE?

(Science: 112.14 3.2a, 3.2d, 3.10a, 3.10b)

Do you like apples? How about kiwi and oranges? Are you nutty for cashews or almonds?
Do you love pumpkin pie and carving Jack-o-lanterns at Halloween?

If you answered "yes" to any of these questions, you can thank honeybees.
They are important pollinators of all of these plants and many more. In fact, bees help
produce \$15 billion in U.S. crops each year.

Help the bee pollinate the crops and return to its hive. BEE sure to avoid all other obstacle





BEEES WORD SCRAMBLE

AEDONBM

TNNNAEA

EBE

REPEKBEEE

MCNOEOYHB

COYLON

GEGS

ENRDO

EVIH

OYHEN

RTNEAC

RAVAL

NSUER

OLLEPN

PUAP

EQUEN

WROREK EEB

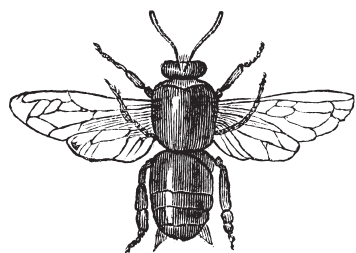
WIGSN

OAXHTR

WAGEGL CNEDA

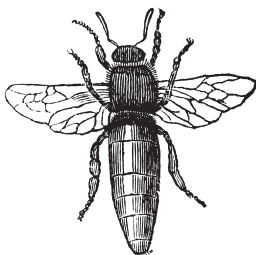


HOW IS A COLONY ORGANIZED?



QUEEN

- There is only one queen bee per colony
- Her primary function is laying eggs, as she is the only bee with fully-developed reproductive organs
- She lays up to 3,000 eggs per day and lives for 2 to 3 years
- Fertilized eggs become female, or worker bees
- Unfertilized eggs become male, or drone bees



WORKER

- Worker bees make up about 90% of the hive's populations, which can grow up to 80,000 bees in summer
- Though all worker bees are female, they do not reproduce
- Their many roles include: housekeeper, nursemaid, construction worker, grocer, undertaker and guard
- At 21 days old, they get promoted to foragers, tasked with collecting their food: pollen and nectar



DRONE

- Drone bees make up 0-10% of the colony
- Their main role is to mate with queens from other colonies
- Drone bees do not have stingers

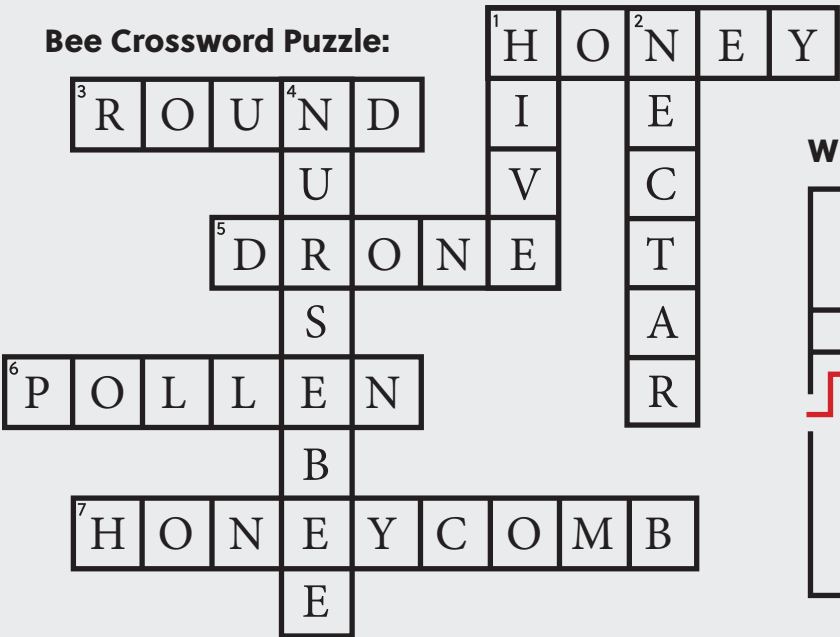
ANSWERS

Bee Math: A) 590, B) 342, C) 930, D) 35, E) 16, F) 313, G) 162, H) 24, I) 881, J) 492, K) 330 L) 16, M) 705, N) 30 O) $2/4 = 1/2$, P) $4/6 = 2/3$, Q) $2/8 = 1/4$, R) $3/3 = 1$, S) $1/2 = 3/6$, T) $1 = 8/8$ U) $6/8 = 3/4$

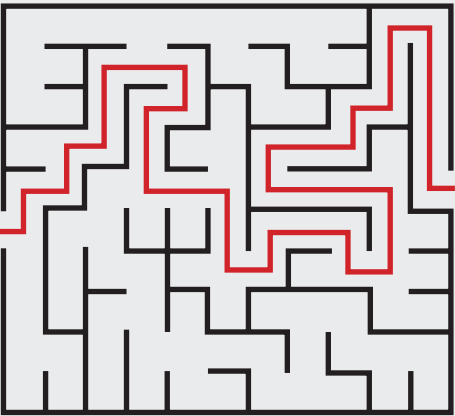
Life Cycle of a Bee: Egg, Larva, Pupa, Adult Bee

Parts of a Bee: 1. Compound eye, 2. Antenna, 3. Head, 4. Thorax, 5. Wings, 6. Abdomen, 7. Legs

Bee Crossword Puzzle:



What do Bees Pollinate:



WORD SCRAMBLE ANSWERS

- ABDOMEN
- ANTENNA
- BEE
- BEEKEEPER
- COLONY
- DRONE
- EGGS
- HIVE
- HONEY
- HONEYCOMB
- LARVA
- NECTAR
- NURSE
- POLLEN
- PUPA
- QUEEN
- THORAX
- WAGGLE DANCE
- WINGS
- WORKER BEE



CREATIVITY CONTEST

Designs must be kept within the square outline surrounding the bee to qualify to win



The Houston Livestock Show and Rodeo™ is a great Texas tradition. Since its beginning in 1932, the Show has entertained millions of fans with livestock competitions, horse shows, a world class carnival, commercial exhibits, and exciting rodeo action.

Use your favorite colors, designs, patterns, shapes, textures, and more to complete your own Rodeo masterpiece. Entries will not be returned.

Winners will receive grounds passes to the Houston Livestock Show and Rodeo™.

Students Name: _____ Grade Level: _____

School District: _____ Teachers Name: _____

School: _____ School Phone: _____

School Mailing Address: _____

School City: _____ State: _____ Zip: _____

I am the parents/legal guardian of _____ and hereby grant Houston Livestock Show and Rodeo, Inc. ("HLSR") permission to display, photograph and/or video my child's 2025 Creativity Contest entry if HLSR should desire to do so. I waive and release any and all rights my child or I may have in and hold harmless Houston Livestock Show and Rodeo from any liability arising from its use of the Creativity Contest entry.

Parent Signature: _____ Printed Name: _____ Date: _____

All entries must be signed and received by February 7, 2025. Return your entry to the classroom, or submit your entry to Houston Livestock Show and Rodeo Creativity Contest, 3 NRG Park, Houston, TX 77054. For questions, contact us at thornton@hlsr.com. Visit rodeohouston.com for more information about the Houston Livestock Show and Rodeo™.